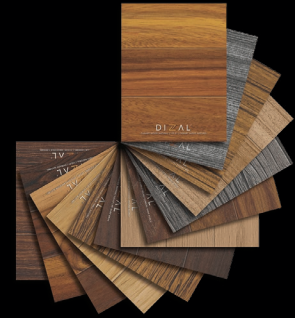


A WORLD OF TEXTURES AND COLORS



**CHOOSE FROM OVER
100 COLORS AND TEXTURES**

DIZAL[®], OUR PROMISE

Dizal guarantees its customers premium-quality products with exclusive, innovative finishes and unrivalled realism.

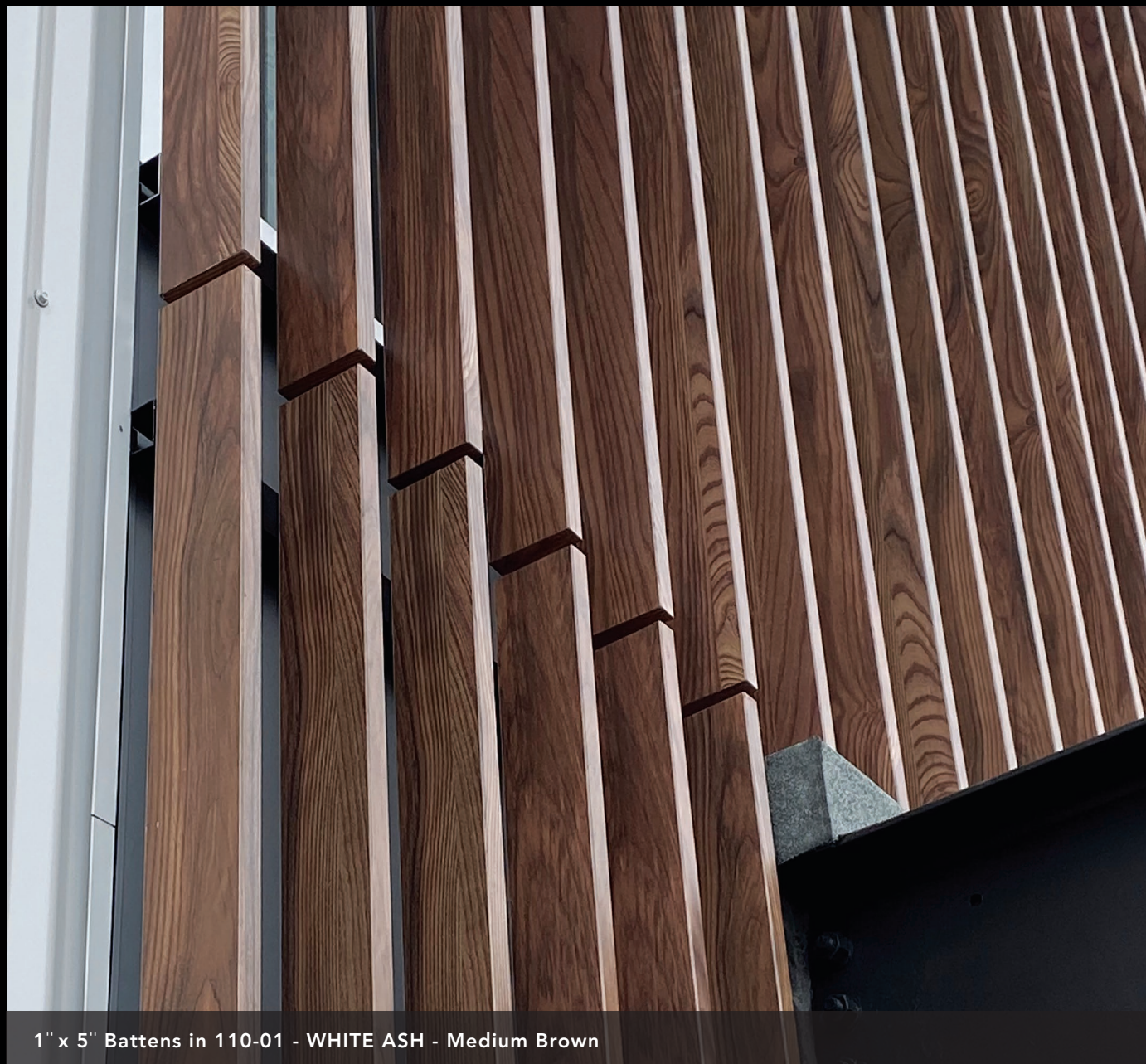
SATISFACTION GUARANTEED

Our products are subject to rigorous testing to ensure exceptional quality, durability and performance. Our range is covered by the best warranty on the market, because we believe you deserve to enjoy your products with complete peace of mind.

DIZAL[®]



**DIGITALLY PRINTED
ARCHITECTURAL ALUMINUM BATTENS**



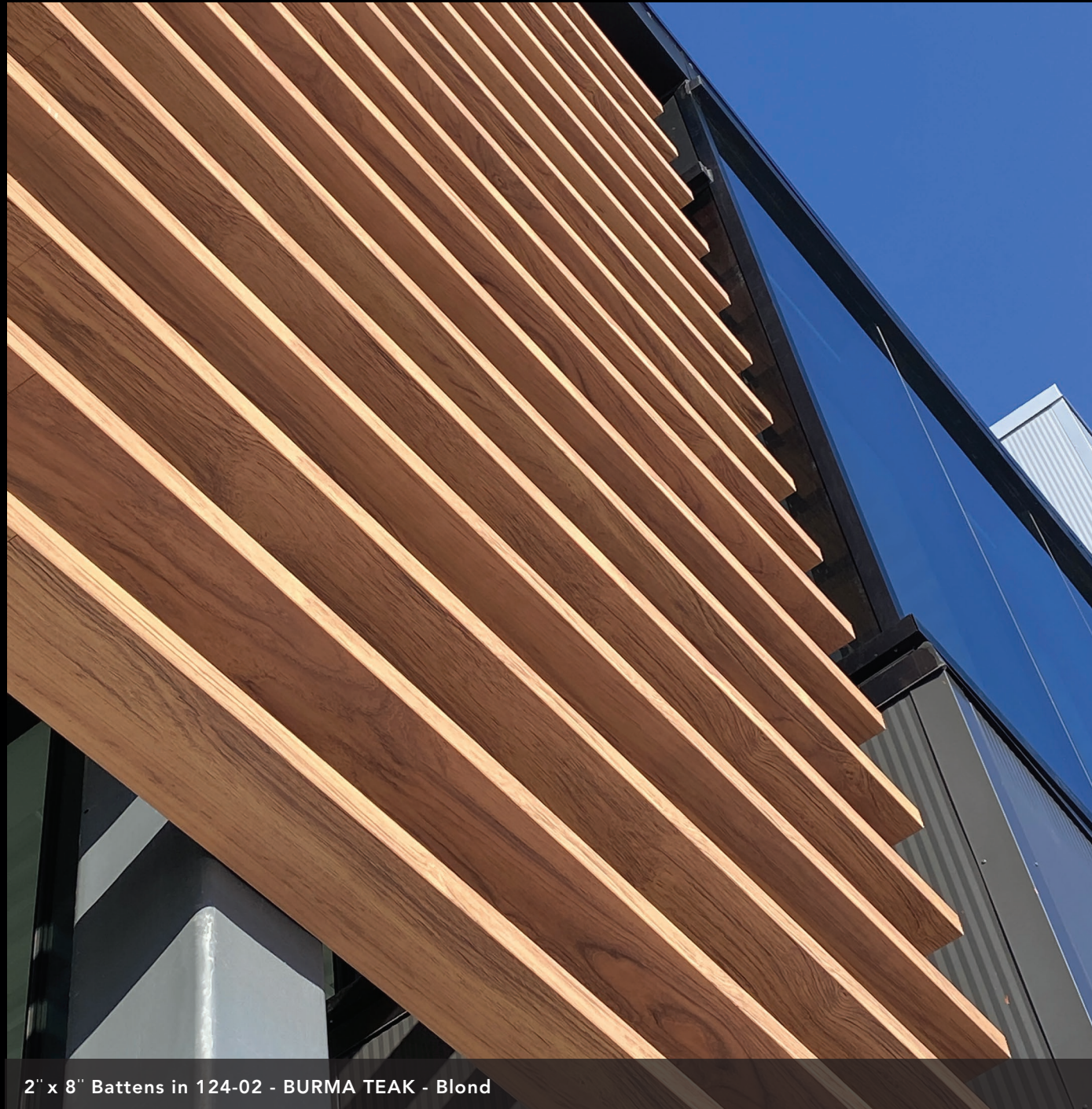
1" x 5" Battens in 110-01 - WHITE ASH - Medium Brown



HIGH-DEFINITION DIGITAL PRINTING

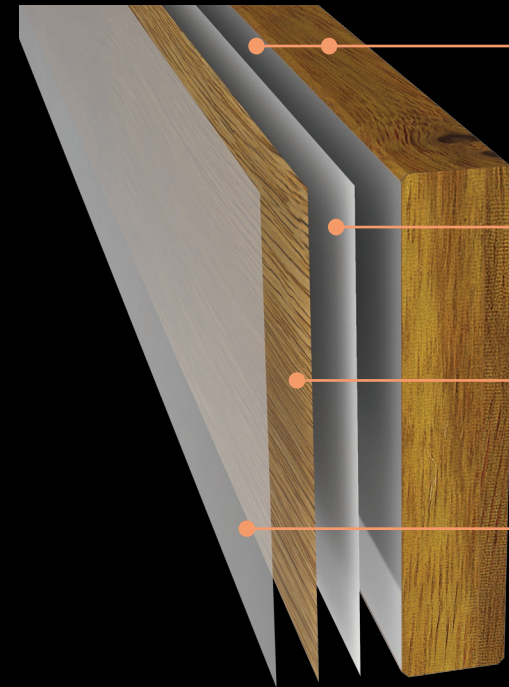
IMAGINE... ALL THE BEAUTY AND RICHNESS OF WOOD, WITH NO MAINTENANCE. NONE WHATSOEVER!

High-definition digital inkjet printing that reproduces photographs of real wood textures.



2" x 8" Battens in 124-02 - BURMA TEAK - Blond

DURABILITY & SIMPLICITY



ALUMINUM

Recognized as the industry's first choice for its exceptional durability. Heavy-duty extruded aluminum.

PRIMER COAT

Specially formulated primer coat assures optimal adhesion between aluminum and ink.

HD INKJET PRINTING

High-definition digital inkjet prints of a wide range of textures with outstanding color variations.

Z CLEAR

A protective clear coat is applied to provide long-term protection against fading.

Batten illustration shows 129-01 - CANARY WOOD - Natural

AVAILABLE SIZES

Standard **thickness**

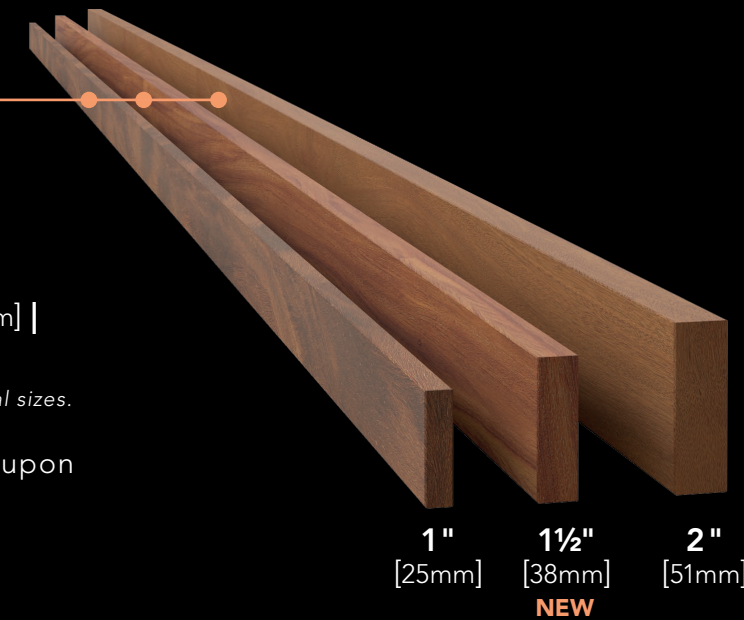
Standard **length**
8' [2.4m] | 12' [3.7m] | 16' [4.9m]

Standard **width***
2" [51mm] | 3" [76mm] | 4" [102mm] | 5" [127mm] |
6" [152mm] | 8" [203mm]

** Nominal dimensions, see technical data sheet for actual sizes.*

Other width dimensions are available, upon request, to suit any type of project.

Batten illustration shows 101-01 - CUMARU - Variegated Light



TESTS & CERTIFICATIONS

- . CAN/ULC S102 - Fire Resistance
- . CAN/ULC S114 - Fire Resistance
- . ASTM E84 - Fire Resistance
- . ASTM D6578 - Graffiti Resistance
- . ASTM G155 - UV Resistance
- . ASTM D3359 - Adhesion Testing
- . ASTM D2794 - Impact Resistance
- . ASTM D1037 - Screw pull out strength
- . LEED V4



LIGHTING & MOUNTING OPTIONS



Dizal's aluminum battens are designed to allow architects and designers to create unlimited architectural shapes, and can be used like any other common wood planks available on the market. See the installation guide at dizal.com.

We also offer the option to add 24V LED lighting on the narrower face of the batten to create a unique look and ambiance. There are no visual differences because our acrylic lens is printed with the same texture and color as the batten itself.

DIZAL BRACKETS



Dizal offers 3 bracket models to cater to different types of installation: horizontal or vertical on a wall, hanging from the ceiling, or even secured to the floor to create a privacy screen. The battens can be drilled and/or threaded as needed.

Dizal brackets provide secure and aesthetically pleasing attachment solutions for common installation applications. See the installation guide at dizal.com.

Hundreds of attachment solutions are available on the market from specialized manufacturers.